



FollowMe®

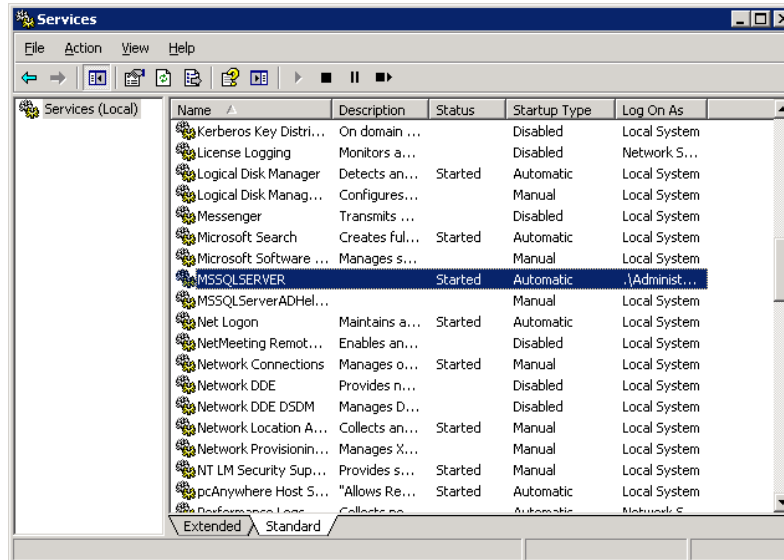
Microsoft SQL Server – Replication Guide

Revision	Date
1.0	05/06/2006

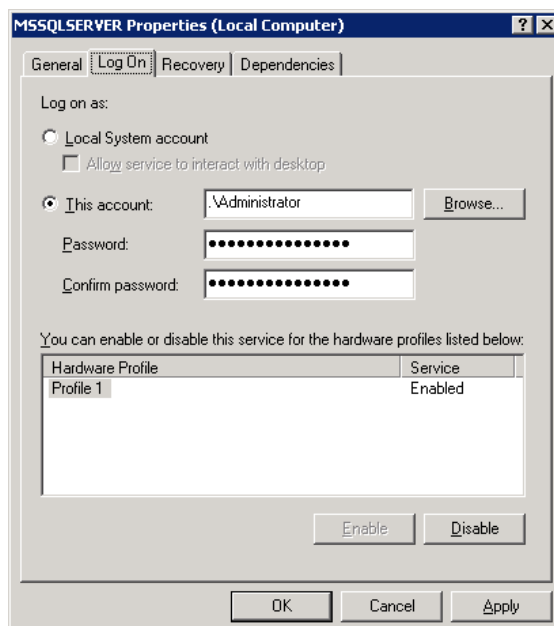
Microsoft SQL Server - Service Logon Rights

To ensure the SQL replication works correctly you should first ensure the *MSSQLSERVER* service and the *SQLSERVERAGENT* are running under a non *Local System* account.

- 1) Load up the Windows Services manager.



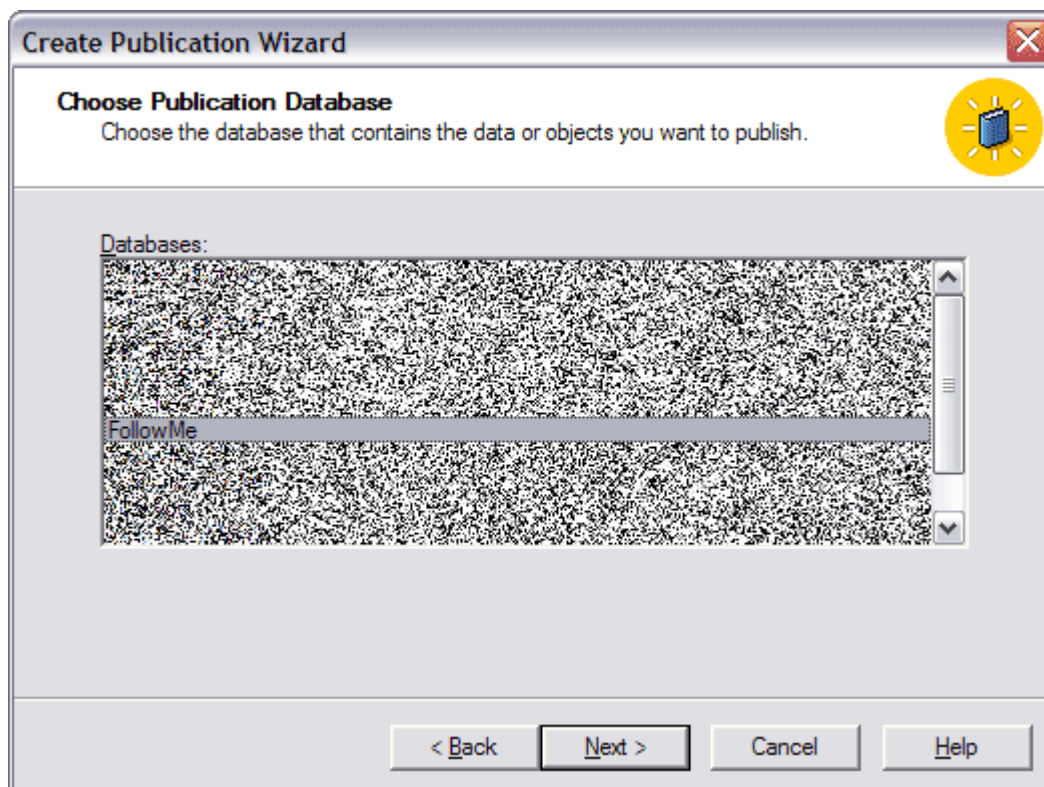
- 2) Under the MSSQLSERVER properties, ensure the service runs under a local or domain administrator account.





Creating a Pull Subscription






Select the database which from the publication should be created:




Create Publication Wizard 


Select Publication Type 

Select the publication type that best supports the requirements of your application.

-  **Snapshot publication** – The Publisher periodically replaces Subscriber data with an updated snapshot. This is appropriate when the Subscriber data need not be constantly up-to-date.
-  **Transactional publication** – Data is usually updated at the Publisher, and changes are sent incrementally to Subscribers. Updates to Subscribers preserve transactional consistency and atomicity.
-  **Merge publication** – Data can be updated at the Publisher or any Subscriber. Changes are merged periodically at the Publisher. This supports mobile, occasionally connected Subscribers.

< Back Next > Cancel Help

Create Publication Wizard 

Specify Subscriber Types 

What types of Subscribers will subscribe to this publication?

Select all of the types of Subscribers that you expect to subscribe to this publication.

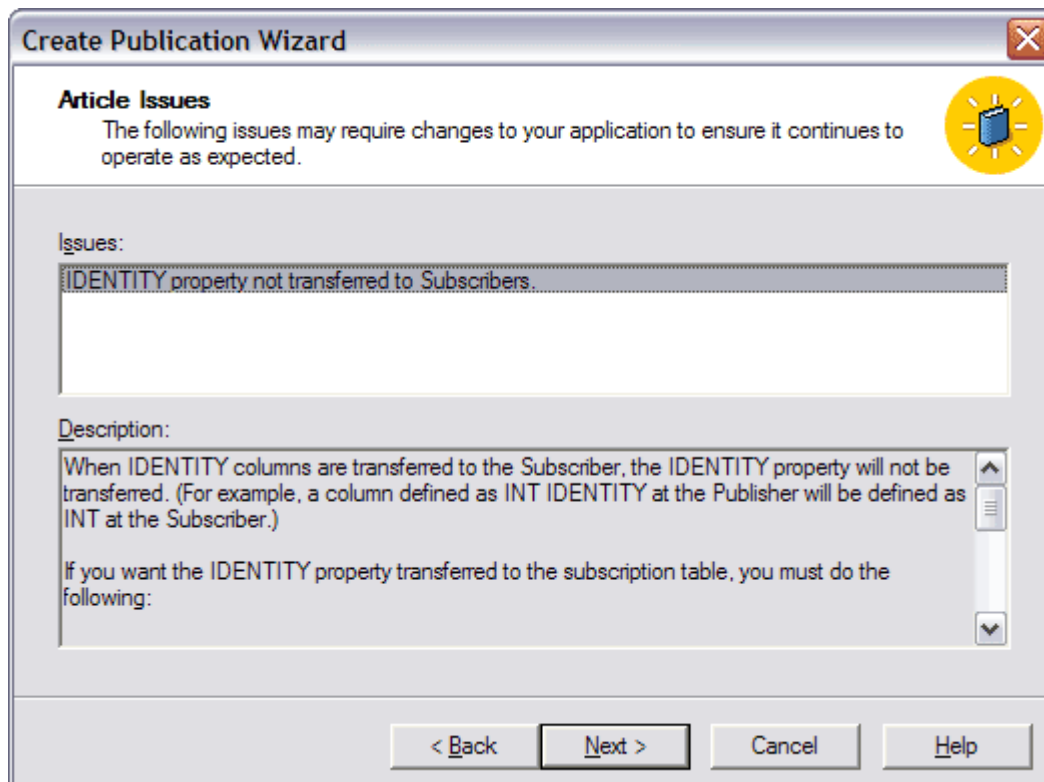
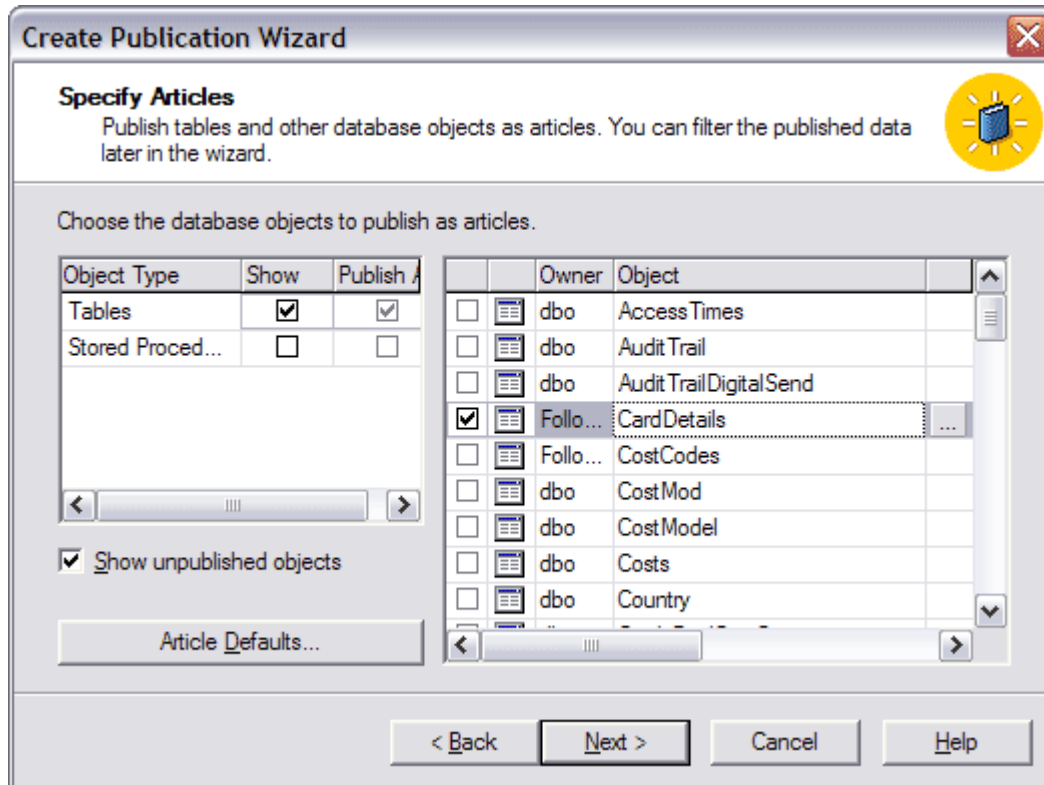
- Servers running SQL Server 2000**
- Servers running SQL Server version 7.0**
- Heterogeneous data sources, such as Oracle or Microsoft Access; or servers running earlier versions of SQL Server**


Subscribers that are servers running SQL Server version 7.0 cannot use properties that are new in SQL Server 2000. If you select this Subscriber type, the new properties will not be available in this wizard.


< Back Next > Cancel Help

Select the following tables (recommended):

- Master
 - CardDetails
 - Users
- Slave
 - AuditTrail
 - AuditTrailDigitalSend



Create Publication Wizard 

Select Publication Name and Description 


Select a name and description for this publication.


Publication name:

Publication description:

The name may contain any character except *[]\|/ <>' " ? or %

< Back Next > Cancel Help

Create Publication Wizard 

Customize the Properties of the Publication 

Define data filters or customize the remaining properties; otherwise, create the publication as specified.

Do you want to define data filters or customize the remaining properties of this publication?

Yes, I will define data filters, enable anonymous subscriptions, or customize other properties

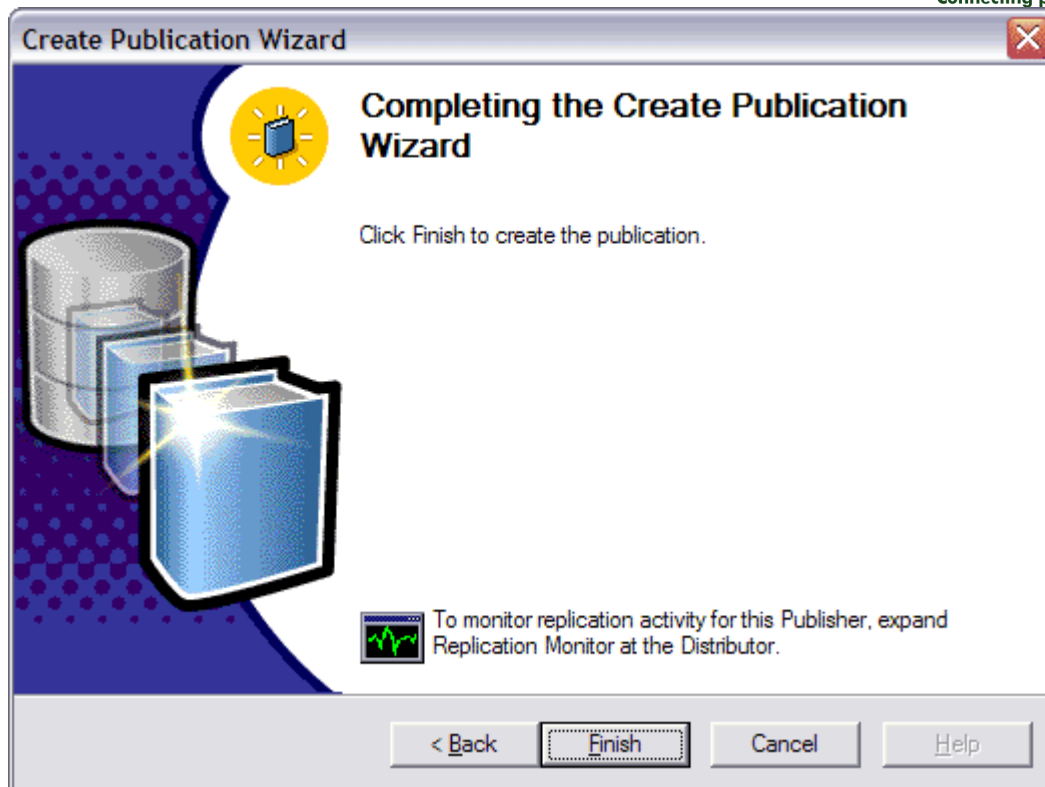
No, create the publication as specified

Create a snapshot publication from database 'FollowMe'.

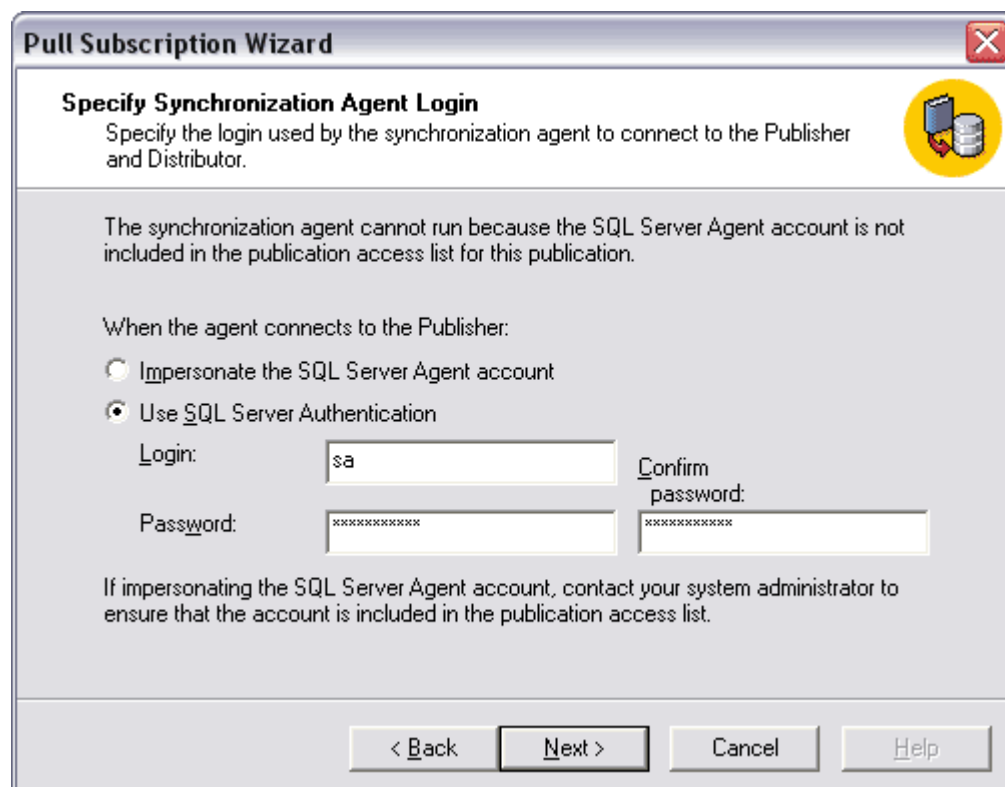
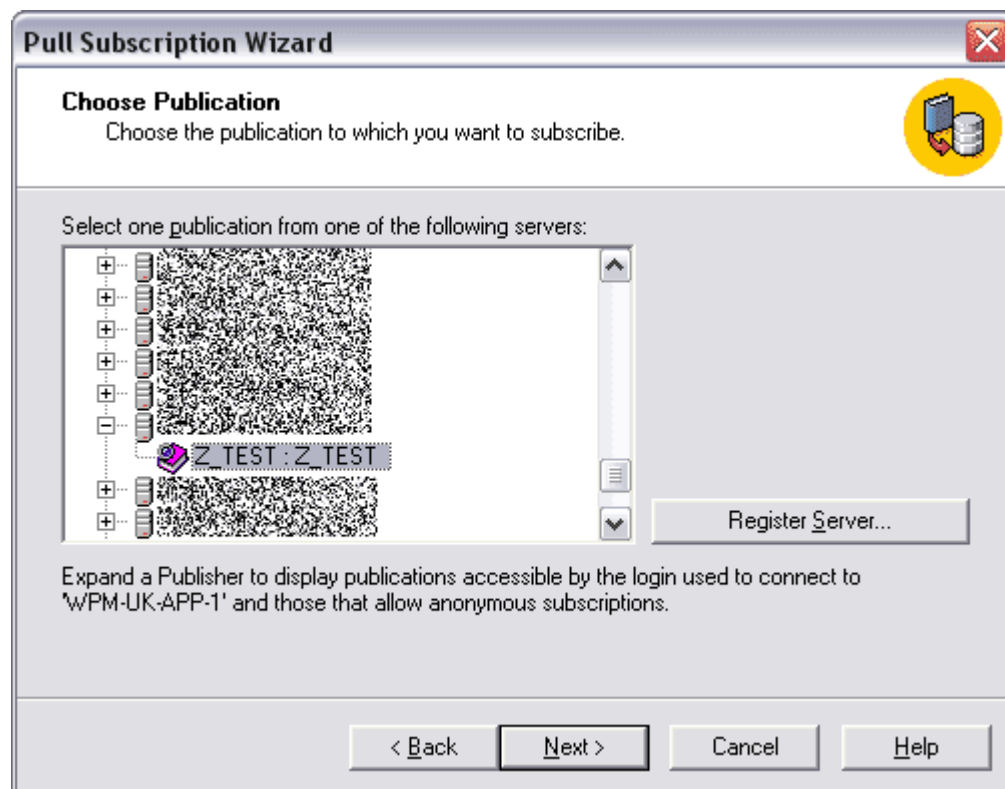
The following types of Subscribers may subscribe to this publication:
Servers running SQL Server 2000
Servers running SQL Server version 7.0

Publish the following tables as articles:
'CardDetails' as 'CardDetails'
'Users' as 'Users'

< Back Next > Cancel Help



Creating a Pull Subscription



Pull Subscription Wizard 

Initialize Subscription 

Specify whether the subscription(s) needs to be initialized, and if so, when to start the initialization process.

Does Microsoft SQL Server need to initialize the publication schema and data at the Subscriber when the subscription is created?

Yes, initialize the schema and data

If yes, the Snapshot Agent must create a snapshot of the publication schema and data. The Distribution Agent will apply the snapshot automatically when it is available.

No, the Subscriber already has the schema and data

< Back Next > Cancel Help

Pull Subscription Wizard 

Snapshot Delivery 

Specify how to access the snapshot files at the time the subscription is initialized.

Use snapshot files from the default snapshot folder for this publication

Use snapshot files from the following folder:

< Back Next > Cancel Help

Pull Subscription Wizard

Set Distribution Agent Schedule

Specify how frequently the Distribution Agent(s) updates the subscription(s).

When should the Distribution Agent update the subscription?

Continuously -- provides minimal latency between when an action occurs at the Publisher and is propagated to the Subscriber

Using the following schedule:

Occurs every 1 day(s), at 01:00:00. Change...

On demand only -- you can synchronize this subscription using SQL Server Enterprise Manager or the Windows Synchronization Manager

< Back Next > Cancel Help

Pull Subscription Wizard

Start Required Services

See the status of the services required for this subscription(s) and select those to be started after the subscription(s) is created.

This subscription(s) requires the following services to be running on the indicated servers.

	Service (on Server)	Status
<input checked="" type="checkbox"/>	SQLServerAgent (on [server name])	Running

A service whose check box is selected will be started automatically after the subscription(s) is created. A service whose check box is not selected will have to be started manually for your subscription to work.

< Back Next > Cancel Help



Optional SQL Statements

Master Database Replication Scripts

```
-- Enabling the replication database
use master
GO

exec sp_replicationdboption @dbname = N'FollowMe', @optname = N'publish',
@value = N'true'
GO

use [FollowMe]
GO

-- Adding the snapshot publication
exec sp_addpublication @publication = N'FollowMe', @restricted = N'false',
@sync_method = N'native', @repl_freq = N'snapshot', @description = N'Snapshot
publication of FollowMe database from Publisher CRYOFOLLOWMEL.', @status =
N'active', @allow_push = N'true', @allow_pull = N'true', @allow_anonymous =
N'false', @enabled_for_internet = N'false', @independent_agent = N'false',
@immediate_sync = N'false', @allow_sync_tran = N'false', @autogen_sync_procs =
N'false', @retention = 336
exec sp_addpublication_snapshot @publication = N'FollowMe',@frequency_type = 4,
@frequency_interval = 1, @frequency_relative_interval = 0,
@frequency_recurrence_factor = 1, @frequency_subday = 1,
@frequency_subday_interval = 0, @active_start_date = 0, @active_end_date = 0,
@active_start_time_of_day = 231600, @active_end_time_of_day = 0
GO

exec sp_grant_publication_access @publication = N'FollowMe', @login =
N'BUILTIN\Administrators'
GO
exec sp_grant_publication_access @publication = N'FollowMe', @login =
N'distributor_admin'
GO
exec sp_grant_publication_access @publication = N'FollowMe', @login = N'sa'
GO

-- Adding the snapshot articles
exec sp_addarticle @publication = N'FollowMe', @article = N'Users',
@source_owner = N'dbo', @source_object = N'Users', @destination_table =
N'Users', @type = N'logbased', @creation_script = null, @description = null,
@pre_creation_cmd = N'drop', @schema_option = 0x00000000000000F1, @status = 0,
@vertical_partition = N'false', @ins_cmd = N'SQL', @del_cmd = N'SQL', @upd_cmd
= N'SQL', @filter = null, @sync_object = null
GO
exec sp_addarticle @publication = N'FollowMe', @article = N'CardDetails',
@source_owner = N'dbo', @source_object = N'CardDetails', @destination_table =
N'CardDetails', @type = N'logbased', @creation_script = null, @description =
null, @pre_creation_cmd = N'drop', @schema_option = 0x00000000000000F1, @status
= 0, @vertical_partition = N'false', @ins_cmd = N'SQL', @del_cmd = N'SQL',
@upd_cmd = N'SQL', @filter = null, @sync_object = null
GO
```

NOTE: scripts above assume database name is *FollowMe*.

Slave Database Scripts

Modify identity fields to change them to integers.

```
-- Modify Users table (remove identity)
ALTER TABLE Users MODIFY UserID integer NULL
-- Modify CardDetails table (remove identity)
ALTER TABLE CardDetails MODIFY CardID integer NULL
```