

IBS Control Center

(Version 8.0 and up)

Install Tool for IBS

Quick Installation Guide

Table of content

Table of content	2
Copyright, Disclaimer and Trademarks.....	3
Pre-requisites.....	4
Introduction	5
Installation.....	6
First start.....	9
Update Check	10
Usage	11
Appendix A: Communication Ports	12
Appendix B: Supported vs. custom (e.g. domestic) devices	13
Appendix C: Uninstall.....	14

Copyright, Disclaimer and Trademarks

Copyright

Copyright stethos Systemhaus GmbH. All rights reserved. No part of this publication may be reproduced, transmitted, transcribed, stored in a retrieval system, or translated into any language or any computer language, in any form or by any third party, without prior permission of stethos.

Disclaimer

stethos reserves the right to revise this publication and to make changes from time to time to the contents hereof without obligation to notify any person or organization of such revision or changes. stethos has endeavored to ensure that the information in this publication is correct, but will not accept liability for any error or omission.

Note: Because of the fast pace of software development, it is possible that there will be minor differences between the manual and the actual release of the program.

Trademarks

All trademarks are hereby acknowledged.

Pre-requisites

Hardware requirements:

- CPU
 - 2GHz or higher
- Memory
 - 1GB or higher
- HDD
 - 512 MB free space

Operating System (32 or 64 Bit):

- ClientOS: Windows 10 or higher
- ServerOS: 2012 or higher (IE Enhanced Security Configuration must be **Off**)

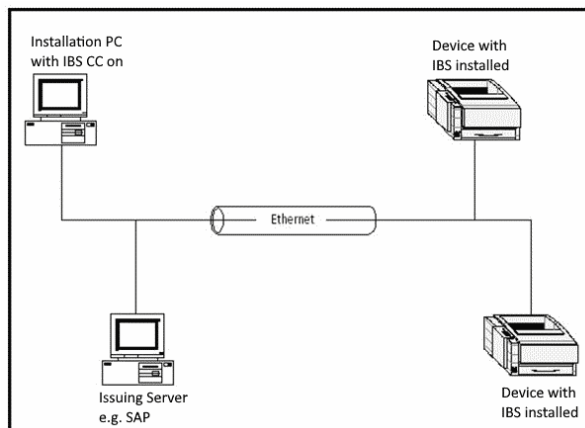
Web browser:

- Using offline help (F1 with no proper internet connection) might lead into a white page instead of showing the content once the auto refresh is not enabled in the browser.

Introduction

The IBS Control Center (IBS CC) is a tool which:

- a) Installs the Ricoh Intelligent Barcode & OCR Package (IBS) on the Ricoh devices.
- b) Provides test scenarios for checking the products functionality.
- c) Offers fast and safe licensing of the product.
- d) Helps to trouble-shoot data stream in the Ricoh devices by providing debugging options.
- e) Provides new functionalities for finding devices on the network.
- f) Customer configurations can be easily installed on Ricoh devices.
- g) A bunch of additional features like Quick set configurations, debugging etc.










The short diagram shows the connectivity situation between the Managing Station computers, the devices, and the issuing system on the network. The Managing Station runs IBS CC and manages the IBS software installed on all devices. Through IBS CC you are able to configure all devices that are compatible with IBS and running in a network. IBS CC is able to find all compatible devices in this local network or beyond and displays them in one window. In this way you have a complete overview of the devices that can be configured.

Installation

IBS CC can be downloaded from the [stethos web site](#)

The download package is compressed (zipped) and contains these files:

Name

 IBS_CC_Software_Installation.pdf
 IBS_Control_Center-XXXXXXXXXX-0.msi
 License1_d.rtf
 License1_e.rtf
 License1_f.rtf
 License1_sp.rtf
 readme.txt

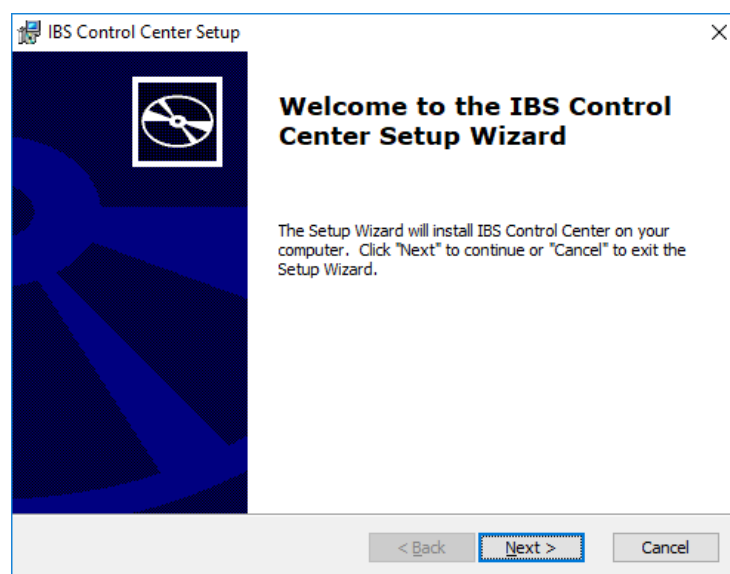
In order to start the installation of IBS CC just launch the IBS_Control_Center-**x-y-z**-0.msi and follow the instructions. The letters x, y and z do reflect major, minor and build version. It's highly recommended to review the readme file prior to the installation.

NOTES:

- a) You need to have local administrator rights.
- b) If you have an earlier version of IBS CC installed, there is no need to remove this version. The automatic IBS CC build-in [update checker](#) informs you if an update is present. So just download the new full installer and run it against an existing installation of IBS CC.
- c) The installer installs the IBS CC software, as well as all needed IBS files.

Usually, you will use the [Single Click Installer](#) and the installation runs automatically. No WEB Page at the device needs to be launched manually.

Welcome Page



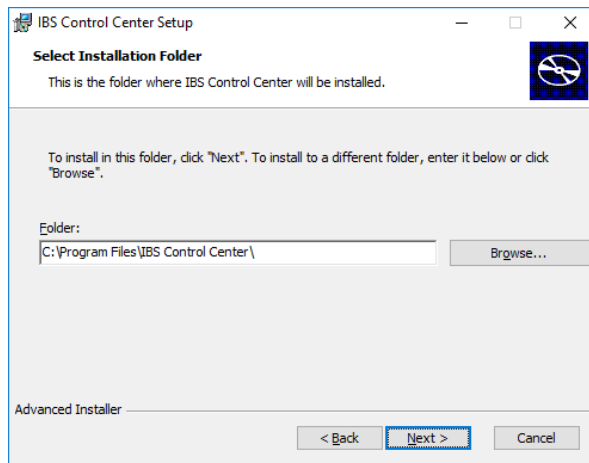
The new installer comes in the language your PC is setup for.

The IBS CC software itself is localized in:

English
 French
 German
 Italian
 Spanish
 Swedish

Press **Next**

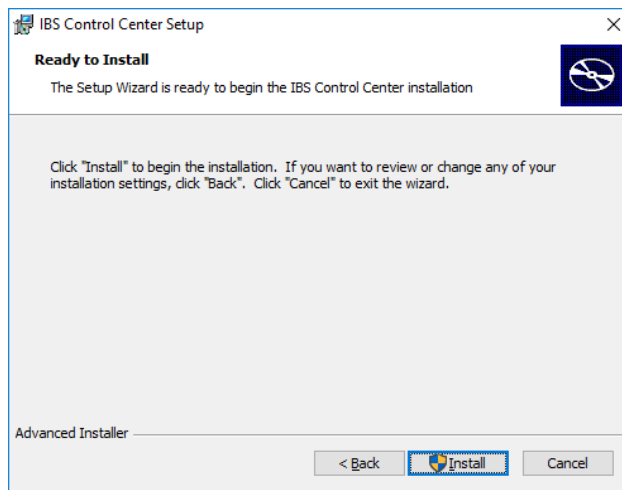
Choosing Destination



The destination folder can be changed according to your preferences by clicking on Browse....

However, we recommend accepting the default folder.

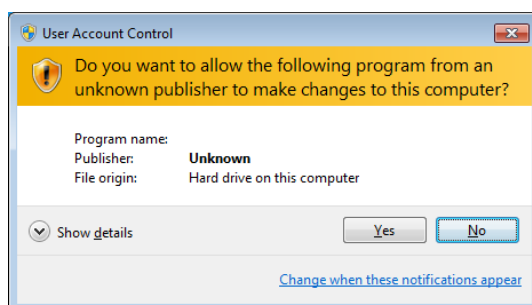
Final Window before installation



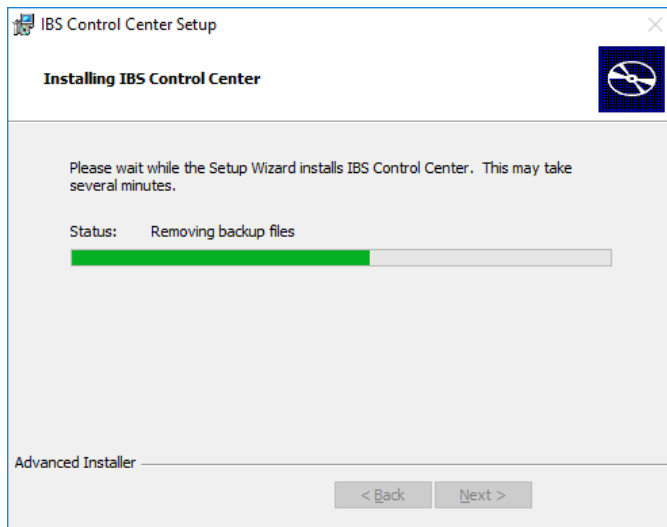
The final installation button indicates, that you need administrative rights for installation to continue.

You also may return to the previous step or cancel the installation. Click on the install button to continue

Please allow changes to the system

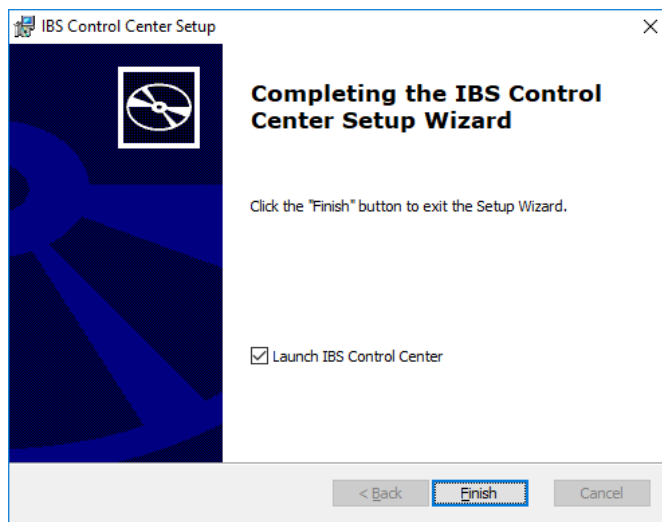


Copying in Progress



This may take a few minutes.

Installation Succeeded



After IBS CC is installed, you can close the installer and by default start IBS CC.

First start

First start of IBS CC – License Agreement

License Agreement

In order to use this software, you must agree to the following license agreement:

License Agreement

This is a legal agreement. By installing this software, you accept all the terms and conditions of this agreement. This Ricoh Europe PLC ("Rico Europe PLC") License Agreement accompanies the Ricoh Europe PLC Barcode & OCR Package - Intelligent Version ("Software") and related materials in writing or electronic format ("Documentation").

Grant of License

Upon your acceptance of this agreement, Ricoh Europe PLC grants to you a non-exclusive royalty-free license, with the right to install and use the Software. Each licensed component may be installed on a single print server, and the administrative applications and client components/applications may be installed on an unlimited number of computers connected with the same network.

Copyright

All the intellectual property rights in the Software are owned by Ricoh Europe PLC, and the software is protected by copyright laws and international treaty provisions. Therefore, you must treat the Software as any other copyrighted material except that you may make one copy of the Software solely for backup or archival purposes, as long as you otherwise comply with the terms of this Agreement. You may not copy the Documentation accompanying the Software for any reason whatsoever.

Restrictions

You may not rent or lease the Software. You may, however, transfer your rights under this Agreement on a permanent basis, provided you assign all your rights under this Agreement to the

Accept Decline

Please read the agreement carefully. If you want to know what IBS CC communicates with the internet, please read: [Privacy statement regarding the internet connections of the software](#) which is part of the questions and answers provided usually via WEB interface.

Every start: IBS CC – News

IBS News

24.03.2017
The IBS Control Center release 5.2.0.0 was released on the 27. March 2017 and supports MP C6503, MP C8003, Pro C5200S, Pro C5210S, MP 2555, MP 3055, MP 3555, MP 4055, MP 5055, MP 6055, Pro 8200S, Pro 8210S, Pro 8220S, Pro 8210, Pro 8220

☐ Don't show anymore

Previous News Close Next News

Depending upon the [settings](#), IBS CC will check on each start for product [related news](#). In the past and in the future that news did/do inform about

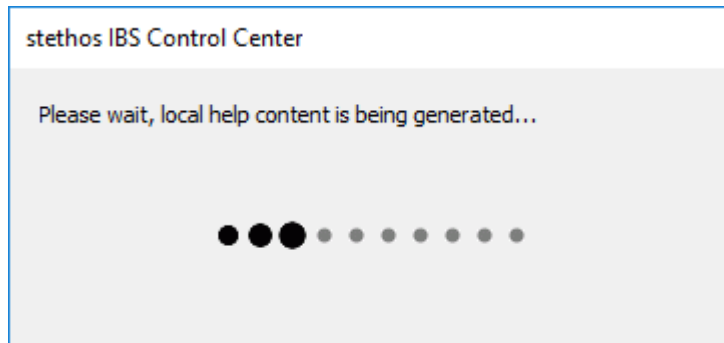
- a) available updates
- b) major bug fixes
- c) coming up versions

If an update is available, you will be asked if you want to download that update.

Update Check

Every time IBS CC is launched an update check is performed. If a [newer version](#) is detected it will tell you accordingly and offer you a link where you can download the latest version. There is no need to uninstall and reinstall. The new version will just update an older version by installation on top and preserves all the settings of the previous one.

First start of IBS CC – Extract local HTML Documentation

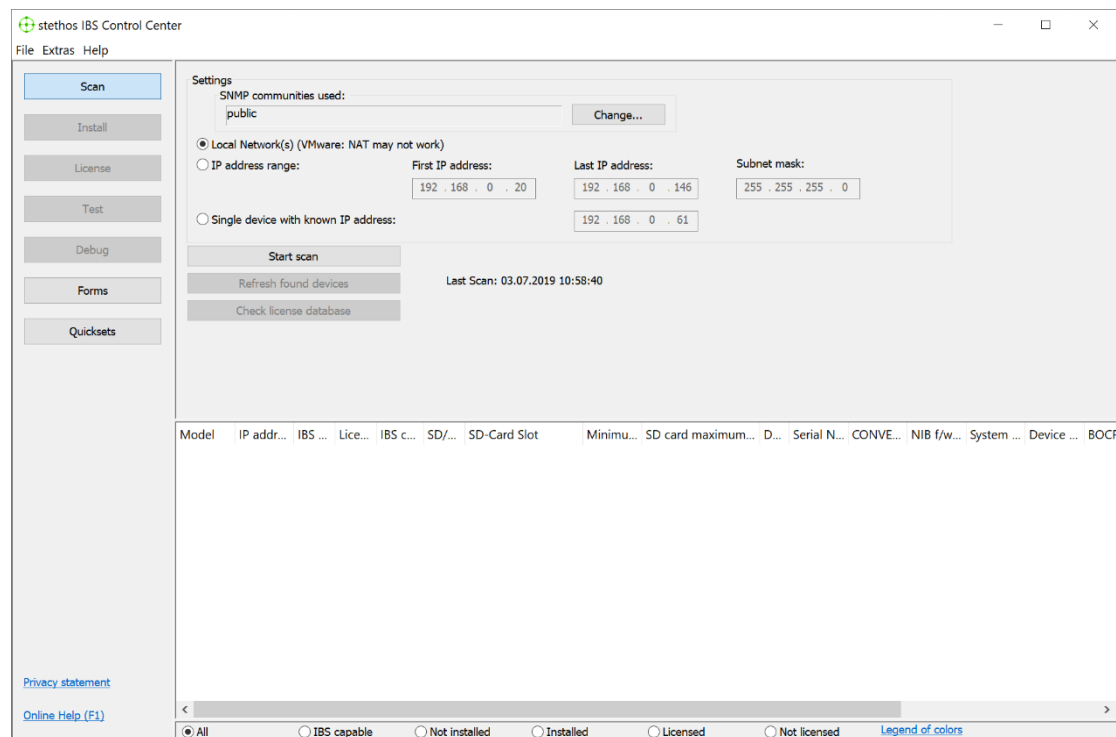


The IBS CC build in online help requires a permanent internet access. Sometimes the installation is performed from a service notebook without internet access, as the customer might not grant access to the internet. If IBS CC recognizes that no online access is possible then it uses a build-in copy of the online help which might not contain the latest information as this help was bundled at compilation date of IBS CC itself.

Usage

The Software starts all the time in the [Scan](#) Menu.

You can check the software settings or start with scanning the network for IBS capable devices. If you hit the online help key F1 you will be introduced into the [Scan](#) device(s) screen. The same happens from every other screen within IBS CC.



Alternatively, you might just follow the menu bar on the left: Scan, Install, License, Test, Debug, Forms or Quicksets.

First time users should have a look at our [how-to video](#).

On any suggestions or needed support, please check the [questions & answers](#) from our web site.

If you need support, please contact support@stethos.com or during Central Europe business hours you can use the [Live-Chat](#) from our web site.

stethos Systemhaus GmbH Phone: [+49] (0) 7031 - 860910
 Weimarer Str. 48 Fax: [+49] (0) 7031 - 871444
 71065 Sindelfingen
 Germany
<https://stethos.com> support@stethos.com

Appendix A: Communication Ports

IBS CC to the Internet (paceline-tools.de and stethos.com):

- TCP Port 80
- TCP Port 443

IBS CC to printer/MFP device:

- TCP Port 80 (http)
- TCP Port 443 (https)
- TCP Port 9100 (or 2 alternative ports and/or TCP Port 515 for LPR):

Network Settings

Alternative Diprint ports in addition to 9100:

☐ Use LPR/LPD protocol exclusively to send files/streams

If you enable this, the program will not be able to execute the following functions:

- It cannot determine the installation medium automatically, if applicable.
- Read back of captured jobs from devices.
- Read files from devices.
- Read back IBS configuration file before overwriting it.
- It cannot determine the volume of the SD Card.

- UPD Port 161 (SNMP)
- TCP Port 23 (diprint conn single set and read)
- TCP Port 10001
- Optional: If the "Extensive scan" in the menu File -> Settings -> General is checked then all open ports will be enumerated via SNMP and then checked one by one in between 65535 and 10000 (backwards):

General

Display Language of IBS Control Center

English/English/Inglés

Preferred Brand:

None

Add a simulated device to all printer lists

No simulation

Update options

☒ Show news at startup

Scan options

☐ Rescan found devices of last scan at startup

☐ Extensive scan (query also ports other than 10001; scanning process takes longer)

Note: IBS CC does not use any specific functions which are based upon the SMB v1 protocol. So, disabling SMB v1 is not causing any malfunction of IBS CC.

Appendix B: Supported vs. custom (e.g. domestic) devices

The most recent list of the supported Ricoh devices can be reviewed all the time on the [stethos web site](#).

Future releases of IBS CC will support new devices and are sneaked [here and the top](#) of the page.

Event it's not officially supported there is a possibility to add custom devices to IBS CC by adding them to this file:

C:\ProgramData\IBS_CC\models_CUSTOM.ini

It can be edited by any plain editor like Notepad supplied by the Windows OS. The .ini mentioned above is only read once at program start of IBS Control Center. If you make modifications to that file you have to terminate and restart IBS Control Center.

Any further information about the syntax is described in the provided sample file which is supplied in the program path of IBS CC named models_CUSTOM_SAMPLE.ini. If IBS CC is updated to a newer version, it is likely that there is also an updated version of models_CUSTOM_SAMPLE.ini supplied. The above-described copy process must be performed again in order to have IBS CC respected the changes of the enhancements.

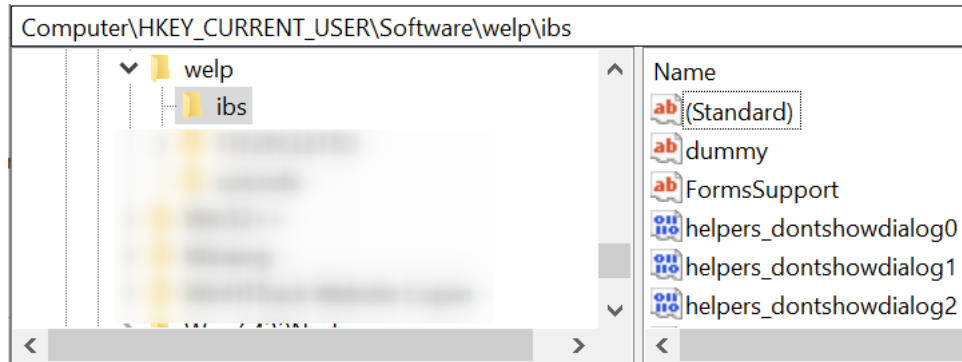
```
; File Version 210222 (0 -> 3)
; INITIAL RELEASE
;
; 220516: SP 8400 added (4)
; 230123: IM C5500 and IM C6000 added (5 -> 6)
; 230320: IM C3010 ... IM C6010 added (7 -> 13) and included in IBS Control Center 8.0.3.0
; 230622: Correction IM C3010 ... IM C6010 (7 -> 13)
; 230628: Correction P 500 (added)/501 (name)/502 (removed) and SP C841 (added)
;
; If CUSTOM models should be respected this file must be copied to c:\ProgramData\IBS_CC\models_CUSTOM.ini
; Once present new devices can be added according to the instructions below
; NOTE: The models_CUSTIOM.ini is read only at program start, have IBS Control Center restarted in case of
changes.
; IMPORTANT: If CUSTOM models are used you must review the file models_CUSTOM_SAMPLE.ini after
installing a new version of IBS Control Center as new TAG's might be introduced.
; This might lead into needed adaptions of the file models_CUSTOM.ini
```

Note: The usage of custom devices is at your own risk.

Appendix C: Uninstall

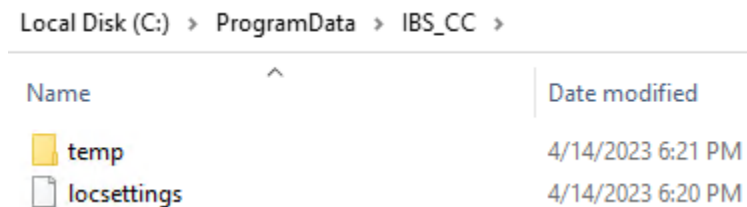
Please use the Windows uninstall features (e.g. Control Panel) to remove IBS CC from your computer.

Even the software gets uninstalled the program settings are preserved within this Registry HIVE. You have the advantage to re-install IBS CC and start with the same settings before the uninstall:



If you want to fully clean-up your computer you have to follow these two steps after IBS CC has been uninstalled:

- 1) Remove this Registry HIVE using regedit:
Computer\HKEY_CURRENT_USER\Software\welp\ibs
- 2) Delete this file:
C:\ProgramData\IBS_CC\locsettings



Deleting the temp folder from above where the temporary install log files are stored is optional.