

IBS Control Center

(Version 8.3 and up)

Install Tool for IBS

Quick Installation Guide

Table of contents

Table of contents2

Copyright, Disclaimer and Trademarks.....3

Prerequisites.....4

Introduction5

Installation.....6

First start.....9

Update Check10

Usage11

Appendix A: Communication Ports12

Appendix B: Supported vs. custom (e.g. domestic) devices13

Appendix C: Uninstall.....15

Copyright, Disclaimer and Trademarks

Copyright

Copyright stethos Systemhaus GmbH. All rights reserved. No part of this publication may be reproduced, transmitted, transcribed, stored in a retrieval system, or translated into any language or any computer language, in any form or by any third party, without prior permission of stethos.

Disclaimer

stethos reserves the right to revise this publication and to make changes from time to time to the contents hereof without obligation to notify any person or organization of such revision or changes. stethos has endeavored to ensure that the information in this publication is correct, but will not accept liability for any error or omission.

Note: Because of the fast pace of software development, it is possible that there will be minor differences between the manual and the actual release of the program.

Trademarks

All trademarks are hereby acknowledged.

Prerequisites

Hardware requirements:

- CPU
 - 2GHz or higher
- Memory
 - 1GB or higher
- HDD
 - 512 MB free space

Operating System:

- Windows 10 x86 and x64, Windows 11 (no ARM processors)
- Windows Server 2016 (no offline help; no diagnostic zip functionality available)
- Windows Server 2019, 2022 and 2025

Note: For Server OS IE Enhanced Security Configuration must be set to **Off**

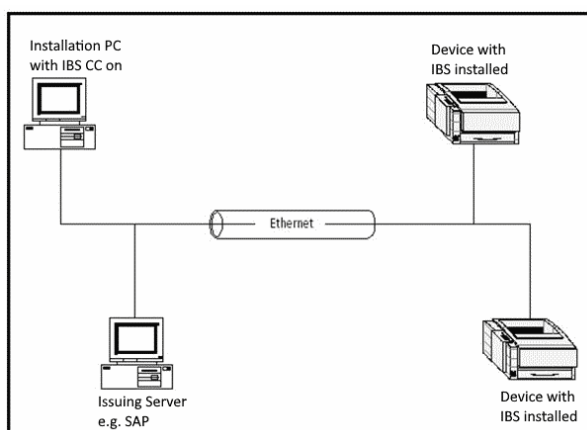
Web browser:

- Using offline help (F1 with no proper internet connection) might open a blank page instead of showing the content once the auto refresh is not enabled in the browser.

Introduction

The IBS Control Center (IBS CC) is a tool which:

- a) Installs the Ricoh Intelligent Barcode & OCR Package (IBS) on Ricoh devices.
- b) Provides test scenarios for checking the product's functionality.
- c) Offers fast and safe licensing of the product.
- d) Helps to trouble-shoot data streams in the Ricoh devices by providing debugging options.
- e) Provides new functionalities for finding devices on the network.
- f) Easily installs customer configurations on Ricoh devices.
- g) Many additional features like Quick set configurations, debugging etc.










This short diagram shows the connectivity situation between the Managing Station computers, the devices, and the issuing system on the network. The Managing Station runs IBS CC and manages the IBS software installed on all devices. Through IBS CC you are able to configure all devices that are compatible with IBS and running in a network. IBS CC is able to find all compatible devices in this local network or beyond and displays them in one window. In this way you have a complete overview of the devices that can be configured.

Installation

IBS CC can be downloaded from the [stethos web site](#)

The download package is compressed (zipped) and contains these files:

Name

 IBS_CC_Software_Installation.pdf
 IBS_Control_Center-XXXXXXXXXX-0.msi
 License1_d.rtf
 License1_e.rtf
 License1_f.rtf
 License1_sp.rtf
 readme.txt

In order to start the installation of IBS CC just launch the **IBS_Control_Center-x-y-z-0.msi** and follow the instructions. The letters x, y and z represent the major, minor and build version numbers. It's highly recommended to review the **readme.txt** file prior to the installation.

NOTES:

- a) You need to have local administrator rights.
- b) If you have an earlier version of IBS CC installed, there is no need to remove this version. The automatic IBS CC built-in [update checker](#) informs you if an update is present. So just download the new full installer and run it against an existing installation of IBS CC.
- c) The installer installs the IBS CC software, as well as all needed IBS files.

Usually, you will use the [Single Click Installer](#) and the installation runs automatically. There is no need to launch the WIM Page of the device.

Welcome Page



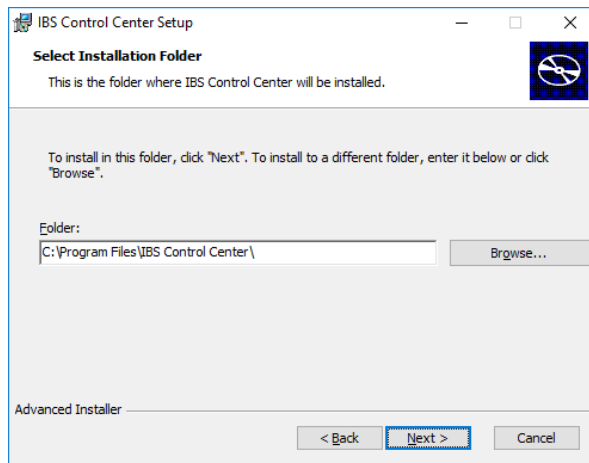
The new installer comes in the language your PC is setup for.

The IBS CC software itself is localized in:

English
 French
 German
 Italian
 Spanish
 Swedish

Press **Next**

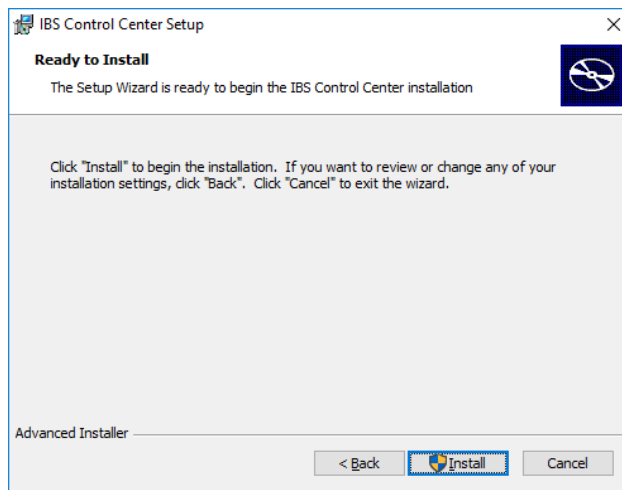
Choosing the Destination



The destination folder can be changed according to your preferences by clicking on Browse....

However, we recommend accepting the default folder.

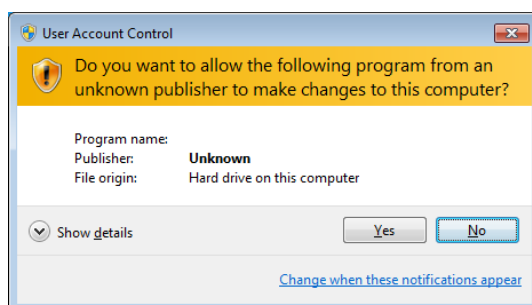
Final Window before installation



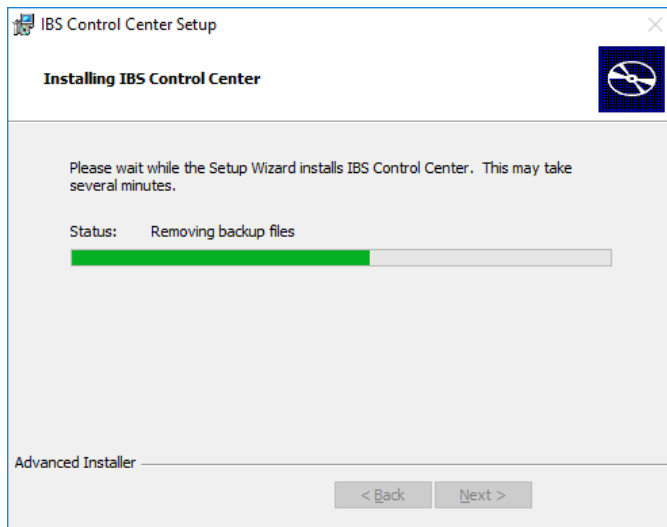
The final installation button indicates, that you need administrative rights for installation to continue.

You also may return to the previous step or cancel the installation. Click on the install button to continue

Please allow changes to the system

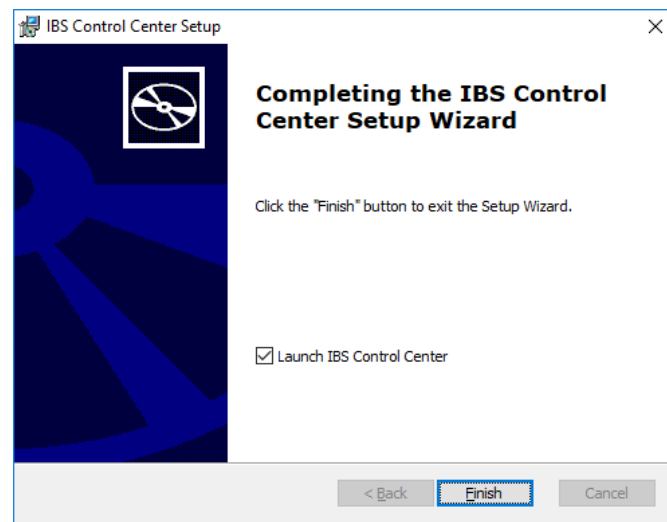


Copying in Progress



This may take a few minutes.

Installation Succeeded



After IBS CC is installed, you can close the installer and by default start IBS CC.

First start

First start of IBS CC – License Agreement

License Agreement

In order to use this software, you must agree to the following license agreement:

License Agreement

This is a legal agreement. By installing this software, you accept all the terms and conditions of this agreement. This Ricoh Europe PLC ("Rico Europe PLC") License Agreement accompanies the Ricoh Europe PLC Barcode & OCR Package - Intelligent Version ("Software") and related materials in writing or electronic format ("Documentation").

Grant of License

Upon your acceptance of this agreement, Ricoh Europe PLC grants to you a non-exclusive royalty-free license, with the right to install and use the Software. Each licensed component may be installed on a single print server, and the administrative applications and client components/applications may be installed on an unlimited number of computers connected with the same network.

Copyright

All the intellectual property rights in the Software are owned by Ricoh Europe PLC, and the software is protected by copyright laws and international treaty provisions. Therefore, you must treat the Software as any other copyrighted material except that you may make one copy of the Software solely for backup or archival purposes, as long as you otherwise comply with the terms of this Agreement. You may not copy the Documentation accompanying the Software for any reason whatsoever.

Restrictions

You may not rent or lease the Software. You may, however, transfer your rights under this Agreement on a permanent basis, provided you assign all your rights under this Agreement to the

Accept Decline

Please read the agreement carefully. If you want to know what IBS CC communicates with the internet, please read: [Privacy statement regarding the internet connections of the software](#) which is part of the questions and answers usually provided via WIM interface.

Every start: IBS CC – News

IBS News

24.03.2017
The IBS Control Center release 5.2.0.0 was released on the 27. March 2017 and supports MP C6503, MP C8003, Pro C5200S, Pro C5210S, MP 2555, MP 3055, MP 3555, MP 4055, MP 5055, MP 6055, Pro 8200S, Pro 8210S, Pro 8220S, Pro 8210, Pro 8220

☐ Don't show anymore

Previous News Close Next News

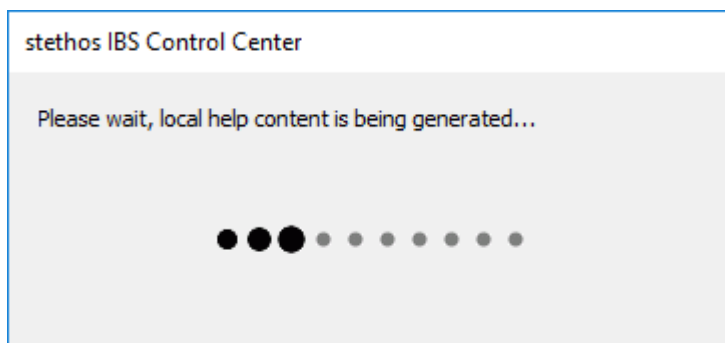
Depending upon the [settings](#), IBS CC will check on each start for product [related news](#). That news informs about:

- a) available updates
- b) major bug fixes
- c) upcoming versions

If an update is available, you will be asked if you want to download that update.

Update Check

First start of IBS CC – Extract local HTML Documentation



The IBS CC built-in online help requires a permanent internet access. Sometimes the installation is performed from a service notebook without internet access, as the customer might not grant access to the internet.

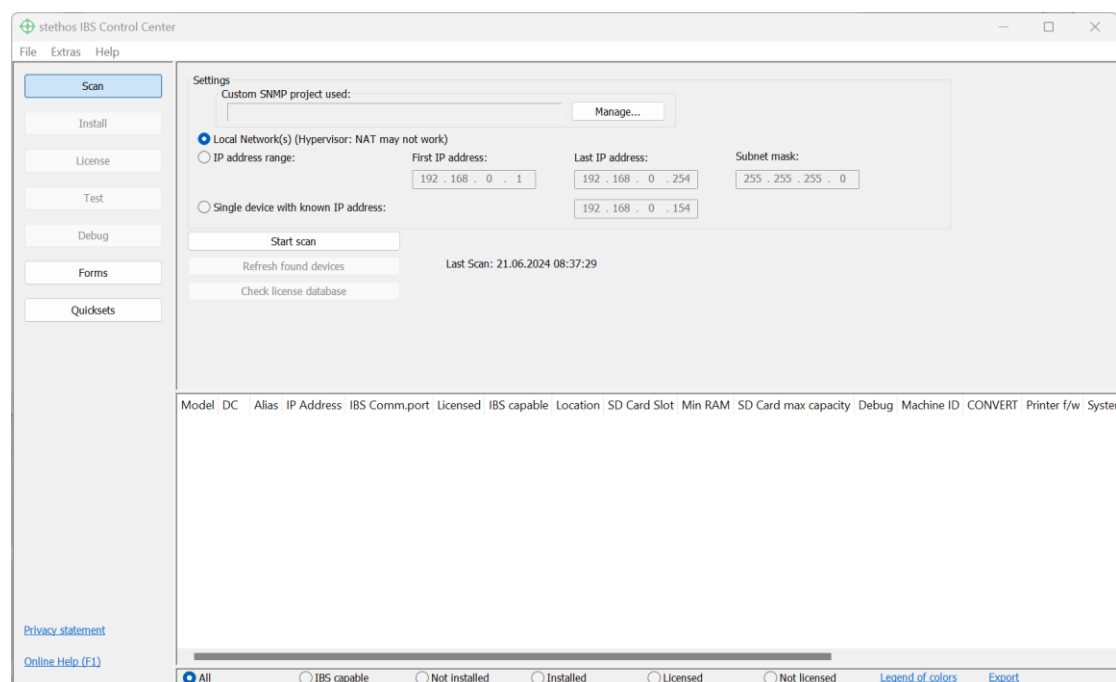
If IBS CC recognizes that no online access is possible then it uses a built-in copy of the online help which might not contain the latest information as this help was bundled at compilation date of IBS CC itself.

Every time IBS CC is launched an update check is performed. If a [newer version](#) is detected it will tell you accordingly and offer you a link where you can download the latest version. There is no need to uninstall and reinstall. The new version will just update an older version by installing on top while preserving all the settings of the previous one.

Usage

The Software always starts in the [Scan](#) Menu.

You can check the software settings or start with scanning the network for IBS capable devices. If you hit the online help key (F1) the help page for the [Scan](#) device(s) screen will be launched. The same happens for every other screen within IBS CC.



Alternatively, you might just follow the menu bar on the left: Scan, Install, License, Test, Debug. Forms or Quicksets.

First time users should have a look at our [how-to video](#).

If you have any suggestions or need support, please check the [Questions & Answers](#) from our web site first.

If you need support, please contact support@stethos.com or during Central Europe business hours you can use the [Live-Chat](#) from our web site.

stethos Systemhaus GmbH
Weimarer Str. 48
71065 Sindelfingen
Germany
<https://stethos.com>

Phone: [+49] (0) 7031 - 860910
Fax: [+49] (0) 7031 - 871444

support@stethos.com

Appendix A: Communication Ports

IBS CC to printer/MFP device:

- TCP Port 80 (http)
- TCP Port 443 (https)
- TCP Port 9100 (or 2 alternative ports and/or TCP Port 515 for LPR):

Network Settings

Alternative Diprint ports in addition to 9100:

☐ Use LPR/LPD protocol exclusively to send files/streams

If you enable this, the program will not be able to execute the following functions:

- It cannot determine the installation medium automatically, if applicable.
- Read back of captured jobs from devices.
- Read files from devices.
- Read back IBS configuration file before overwriting it.
- It cannot determine the volume of the SD Card.

- UDP Port 161 (SNMP)
- TCP Port 23 (diprint conn single set and read)
- TCP Port 10001
- Optional: If the "Extensive scan" in the menu File -> Settings -> General is checked then for found Ricoh devices all open ports will be enumerated via SNMP and then checked one by one in between 65535 and 10000 (backwards):

General

Display Language of IBS Control Center

English/Englisch/Inglés

Preferred Brand:

None

Add a simulated device to all printer lists

No simulation

Update options

☒ Show news at startup

Scan options

☐ Rescan found devices of last scan at startup

☐ Extensive scan (query also ports other than 10001; scanning process takes longer)

Optional: IBS CC to the Internet TCP Port 443 (https):

- stethos.com (for Version update check)
- chat.stethos.com (for direct launch of Webchat function)
- ibscclicense.stethos.info (for online licensing capabilities)

Note: IBS CC does not use any specific functions which are based on the SMB v1 protocol. So, disabling SMB v1 will not cause any malfunction in IBS CC.

Appendix B: Supported vs. custom (e.g. domestic) devices

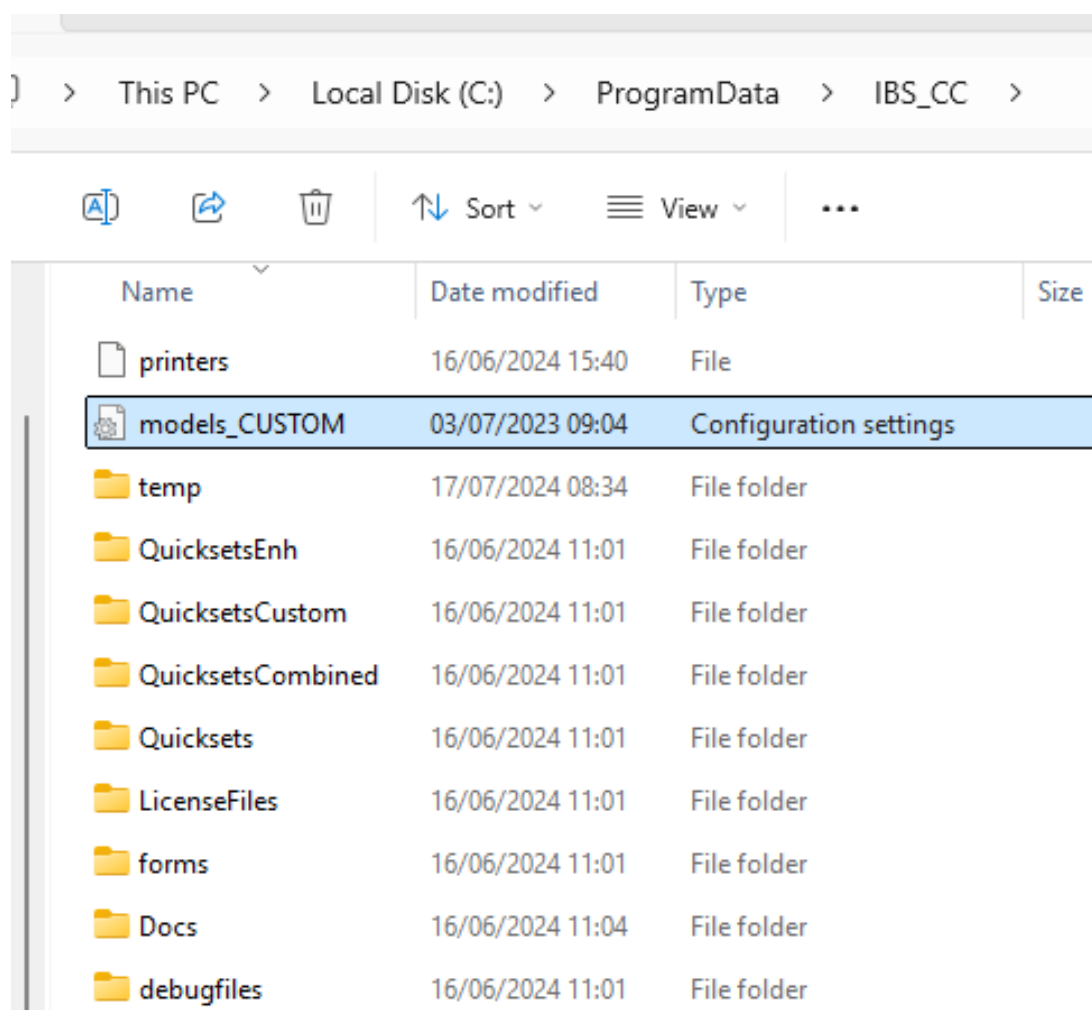
The most recent list of supported Ricoh devices can be reviewed on the [stethos web site](#).

Future releases of IBS CC will support new devices and a sneak preview is available [here at the top](#) of the page.

Even if a device is not officially supported it is possible to add custom devices to IBS CC by adding them to this file:

C:\ProgramData\IBS_CC\models_CUSTOM.ini

That should look like this when file extensions are not shown (file extensions are turned off per default, but most power users turn them on as protection against phishing attacks):



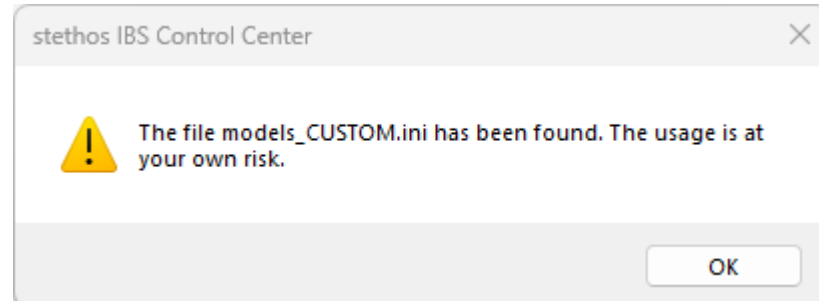
The file can be edited by any plain text editor, such as Notepad supplied by the Windows OS. The .ini mentioned above is only read once at program start of the IBS Control Center. If you make modifications to that file you have to terminate and restart IBS Control Center before the changes take effect.

A sample file with syntax description and many localized models already included is provided in the program path of IBS CC and is named **models_CUSTOM_SAMPLE.ini**. If the sample already contains all your desired custom devices, it can simply be copied over the **models_CUSTOM.ini**, otherwise you must create your own entries for the desired custom devices.

If IBS CC is updated to a newer version, it is likely that there is also an updated version of **models_CUSTOM_SAMPLE.ini** supplied. The above-described process must be performed again in order to have IBS CC respect any changes and enhancements.

```
; File Version 210222 (0 -> 3)
; INITIAL RELEASE
;
; 220516: SP 8400 added (4)
; 230123: IM C5500 and IM C6000 added (5 -> 6)
; 230320: IM C3010 ... IM C6010 added (7 -> 13) and included in IBS Control Center 8.0.3.0
; 230622: Correction IM C3010 ... IM C6010 (7 -> 13)
; 230628: Correction P 500 (added)/501 (name)/502 (removed) and SP C841 (added)
;
; If CUSTOM models should be respected this file must be copied to c:\ProgramData\IBS_CC\models_CUSTOM.ini
; Once present new devices can be added according to the instructions below
; NOTE: The models_CUSTIOM.ini is read only at program start, have IBS Control Center restarted in case of
changes.
; IMPORTANT: If CUSTOM models are used you must review the file models_CUSTOM_SAMPLE.ini after
;             installing a new version of IBS Control Center as new TAG's might be introduced.
;             This might lead into needed adaptions of the file models_CUSTOM.ini
```

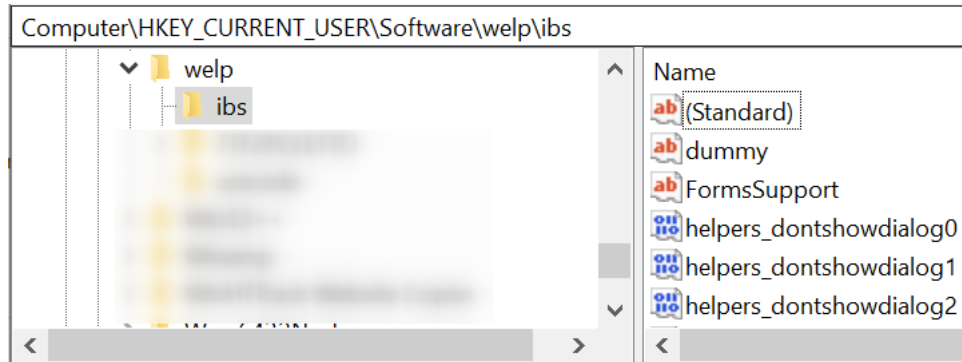
Note: The usage of custom devices is at your own risk. The following warning is shown at every program start before the IBS CC main GUI appears:



Appendix C: Uninstall

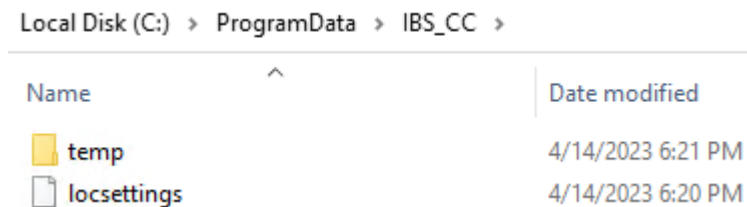
Please use the Windows uninstall features (e.g. Control Panel) to remove IBS CC from your computer.

Even if the software is uninstalled, the program settings are preserved within this Registry HIVE. You have the advantage that you can re-install IBS CC and start with the same settings as before the uninstall:



If you want to fully clean-up your computer you have to follow these two steps after IBS CC has been uninstalled:

- 1) Remove this Registry HIVE using regedit:
Computer\HKEY_CURRENT_USER\Software\welp\ibs
- 2) Delete this file:
C:\ProgramData\IBS_CC\locsettings



Deleting the temp folder from above where the temporary install log files are stored is optional.